



MESA[®]ASHFORD[™]
RETAINING WALL SYSTEM

The Random, Natural Look for Mesa[®] Walls

Ashlar Facing with the Ashford[™] Wall System

Obtaining a natural-inspired ashlar finish for your retaining wall project is easy when you follow one of the three patterns developed for use with the Ashford[™] Retaining Wall.

The examples below are three of an infinite number of options that can be developed with the Ashford Units. The Mesa[®] Ashford[™] Wall's unique top and bottom channel and positive, mechanical connection allow the flexibility to design almost any look desired. However,

the best patterns for constructability are designed in two foot vertical sections and have a repeating pattern as shown.

These units are available in the same colors, blends and textures as other Mesa Units. They can even be antiqued for a beautiful weathered look with minimal product waste. Walls can be built to a near-vertical facing angle, or they can be installed to create 90° corners, stairs and dramatic serpentine curves.



Mesa Ashford Pattern 2-1-2



Mesa Ashford Pattern 6-7-2



Mesa Ashford Pattern 6-7-5

THE DIFFERENT MESA® ASHFORD™ UNITS

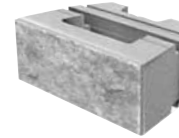
The Mesa® Ashford™ System's veneer is made up of three unique, high-compressive strength, dry-cast concrete blocks. Each unit has slots to lock the patented Mesa Connector to the Tensar® Structural Geogrids with the block face. This gives the highest quality, block-to-geogrid connection and assures long-term serviceability.



*Tall Unit:
16"h x 6"w x 11"d nom.
60 lbs*



*Medium Unit:
8"h x 12"w x 11"d nom.
60 lbs*



*Standard Unit:
8"h x 18"w x 11"d nom.
75 lbs*

Determining Block Quantities				
Pattern	Square Footage	Standard Unit	Medium Unit	Vertical Unit
2-1-2	4	2	1	2
6-7-2	12	6	7	2
6-7-5	14	6	7	5

From the table above, you can determine the block quantities needed for your project based on one of three pre-designed face patterns. For example, a project requiring 1,000 square feet of wall constructed with pattern 6-7-2 would be calculated as follows:

Step 1: Determine the required units to complete the project by dividing the total project square footage by the pattern square footage. In this case:

$$1000 / 12 = 83.3$$

Step 2: Use the results from **Step 1** to multiply each unit required for the pattern. For this example:

$$83.3 \times 6 = 500 \text{ standard units}$$

$$83.3 \times 7 = 584 \text{ medium units}$$

$$83.3 \times 2 = 167 \text{ vertical units}$$

NOTE: Always round to the next whole number when calculating block quantities.

THE MESA SYSTEMS ADVANTAGE

Mesa Retaining Wall Systems provide superior, attractive and cost-effective solutions for all your retaining wall needs. They combine the economy and versatility of segmental concrete units with proven geogrid technology to create the new standard in structural wall systems. The only single-source, fully integrated SRW system, the Mesa Systems are designed and detailed to provide optimum efficiency and long-term performance. With their positive mechanical connection, full load transfer is assured from wall face to reinforcement for unsurpassed structural reliability. Easy to handle and install, the Mesa Systems are also low maintenance as well. Blocks are locally available in a wide variety of styles, colors and textures. For more information, call **800-TENSAR-1**.

Tensar®

Tensar International Corporation
2500 Northwinds Parkway
Suite 500
Alpharetta, GA 30009
800-TENSAR-1
tensarcorp.com

Distributed by: